

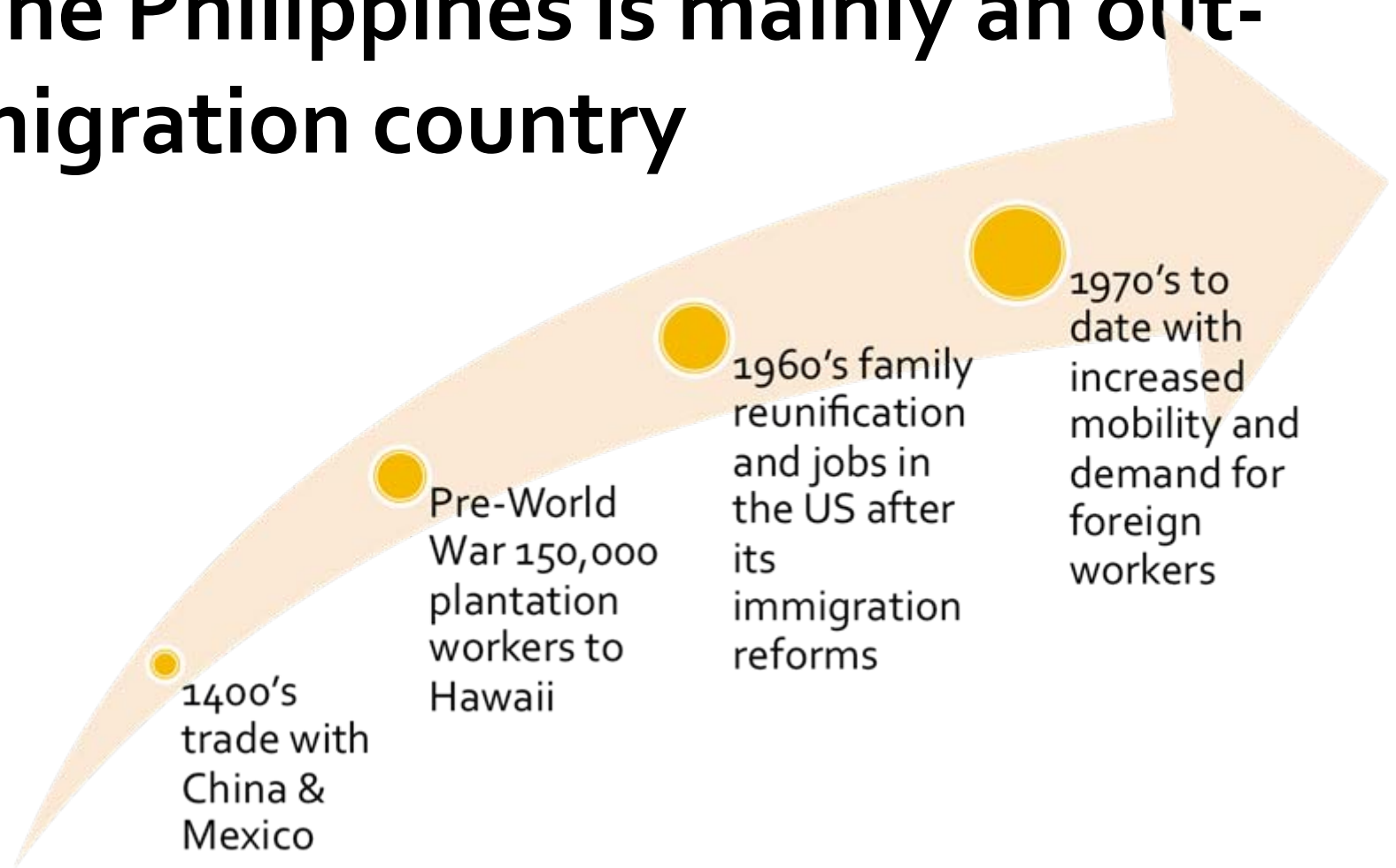
# **MIGRATION PROFILES: DEVELOPING EVIDENCE BASED MIGRATION AND DEVELOPMENT POLICIES**

## **Panel 1: Migration Profile as an Ongoing Process**

A presentation by  
MA. CELESTE M. VALDERRAMA  
Philippine Department of Labor and Employment  
June 30, 2011  
UN HQ, New York City

# Philippine migration and national development

# ■ The Philippines is mainly an out-migration country



# 8.579 million stock estimate of Filipinos abroad (2009)



**4.056 M** –  
Permanent migrants

**3.864 M** -  
Temporary migrants

**658** thousand -  
irregulars

# Top Destinations



**Permanent:**

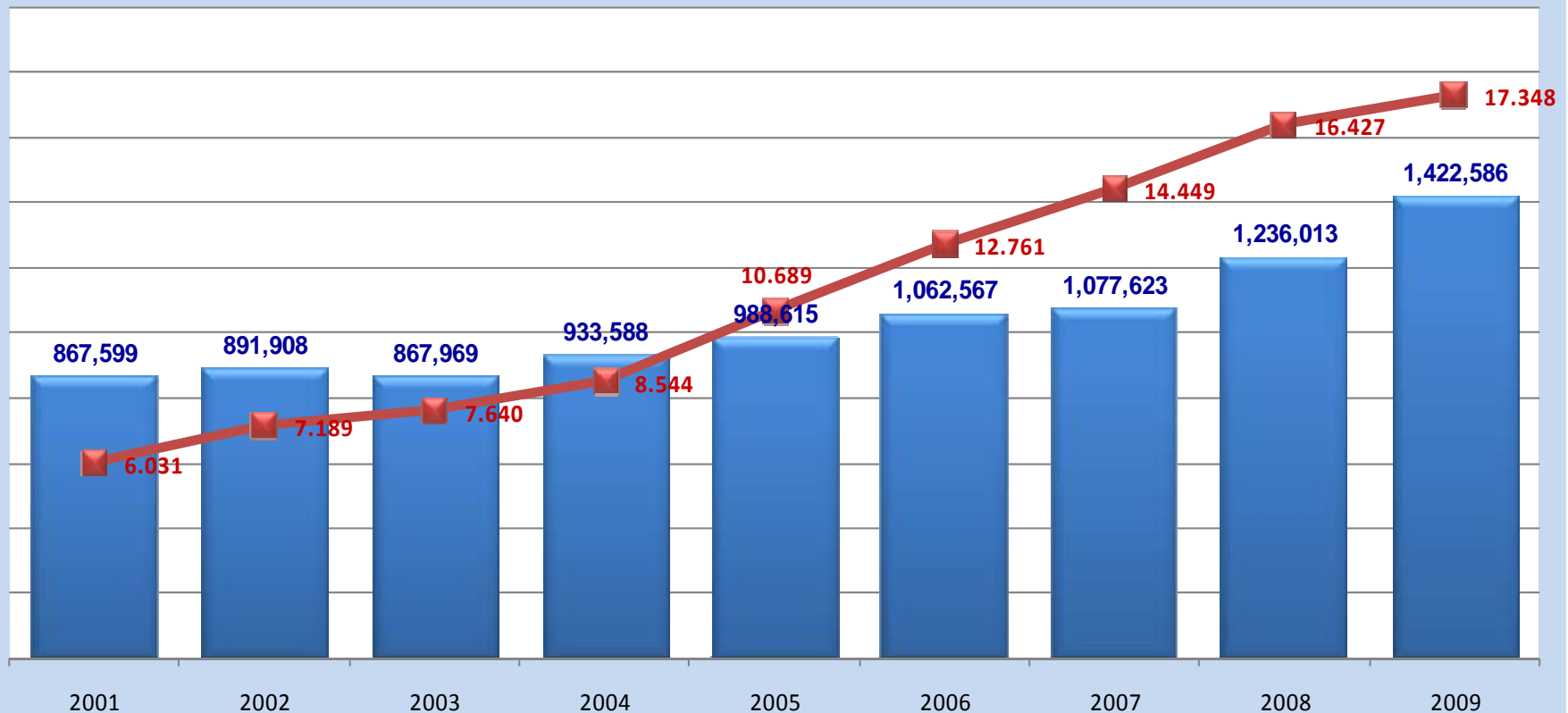
USA,  
Australia,  
Canada, Spain

**Temporary:**

KSA, UAE,  
Qatar, Kuwait,  
USA and HK

# Migration is a key feature of the Philippine labour market

Deployment and  
Remittances (in US\$ Billions)  
2001-2009



# Managing MIGRATION: THE PHILIPPINE EXPERIENCE

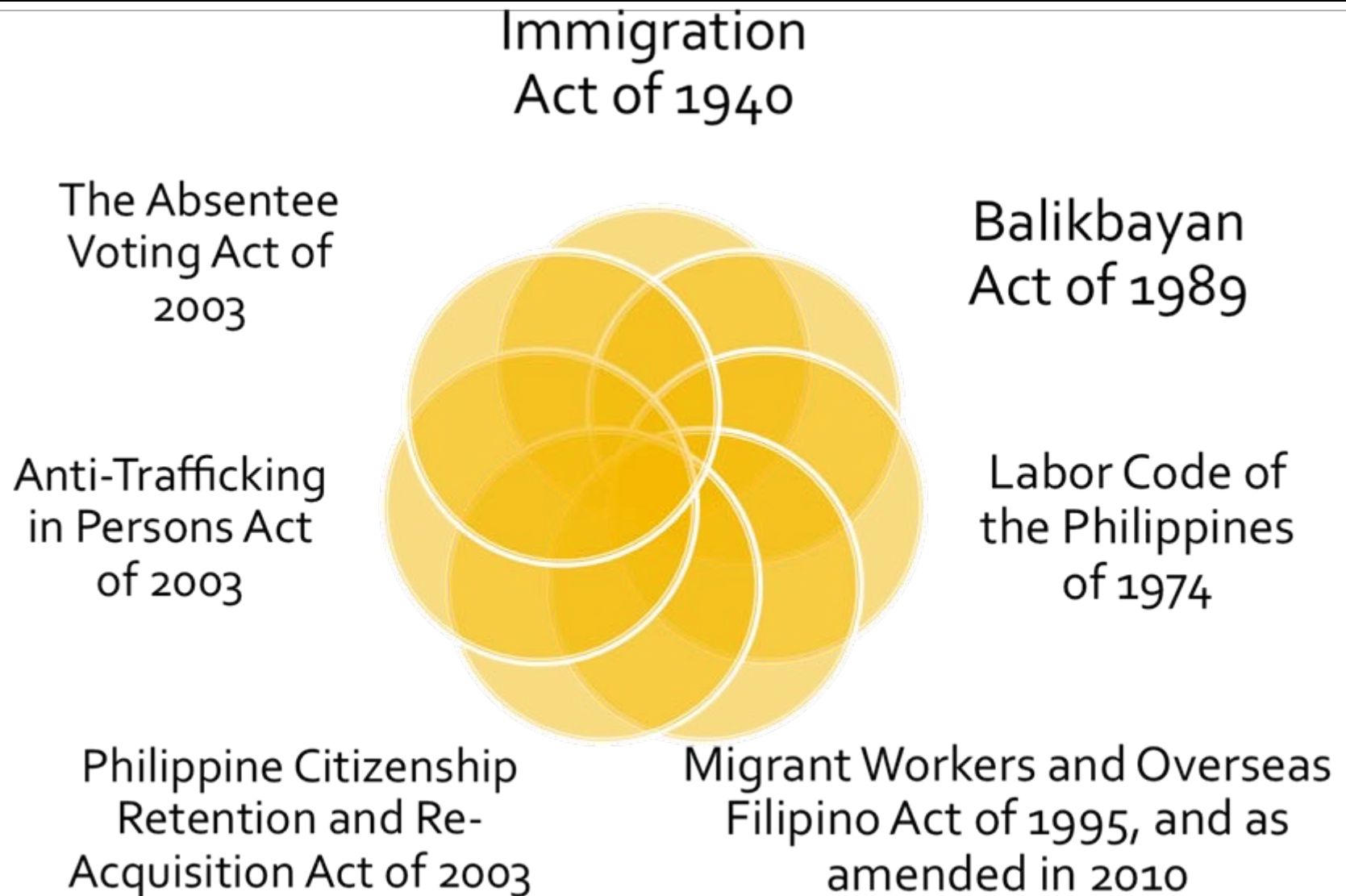


# An extensive network of government agencies on migration

- **Department of Foreign Affairs**
  - Philippine Embassies/ Mission
- **Department of Labor and Employment**
  - Philippine Overseas Employment Administration
    - Overseas Workers' Welfare Administration
      - 38 Philippine Overseas Labor Offices
        - **Bureau of Immigration**
- **Commission on Filipino Overseas**
  - **Bangko Sentral ng Pilipinas**
  - **Department of Tourism**



# An extensive institutional and legal framework



# An extensive use of migration information for decision making

Figure - Overseas Employment: 1972-2004

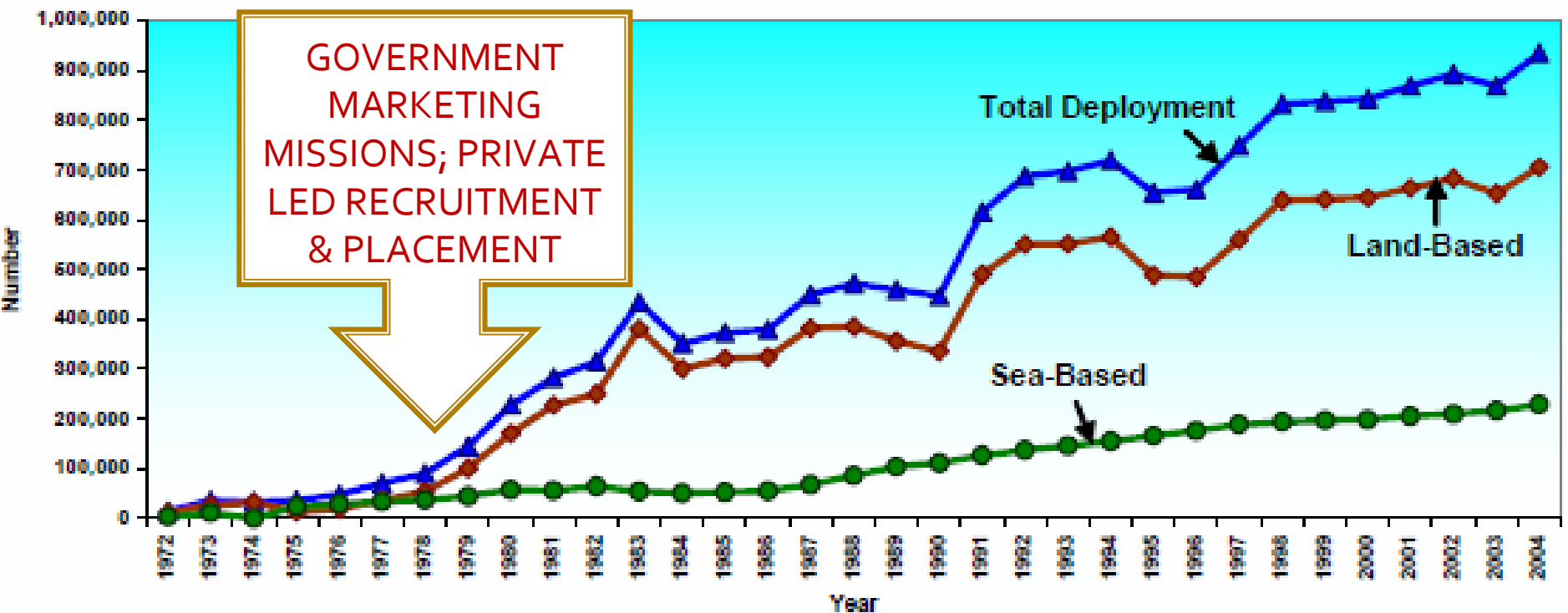
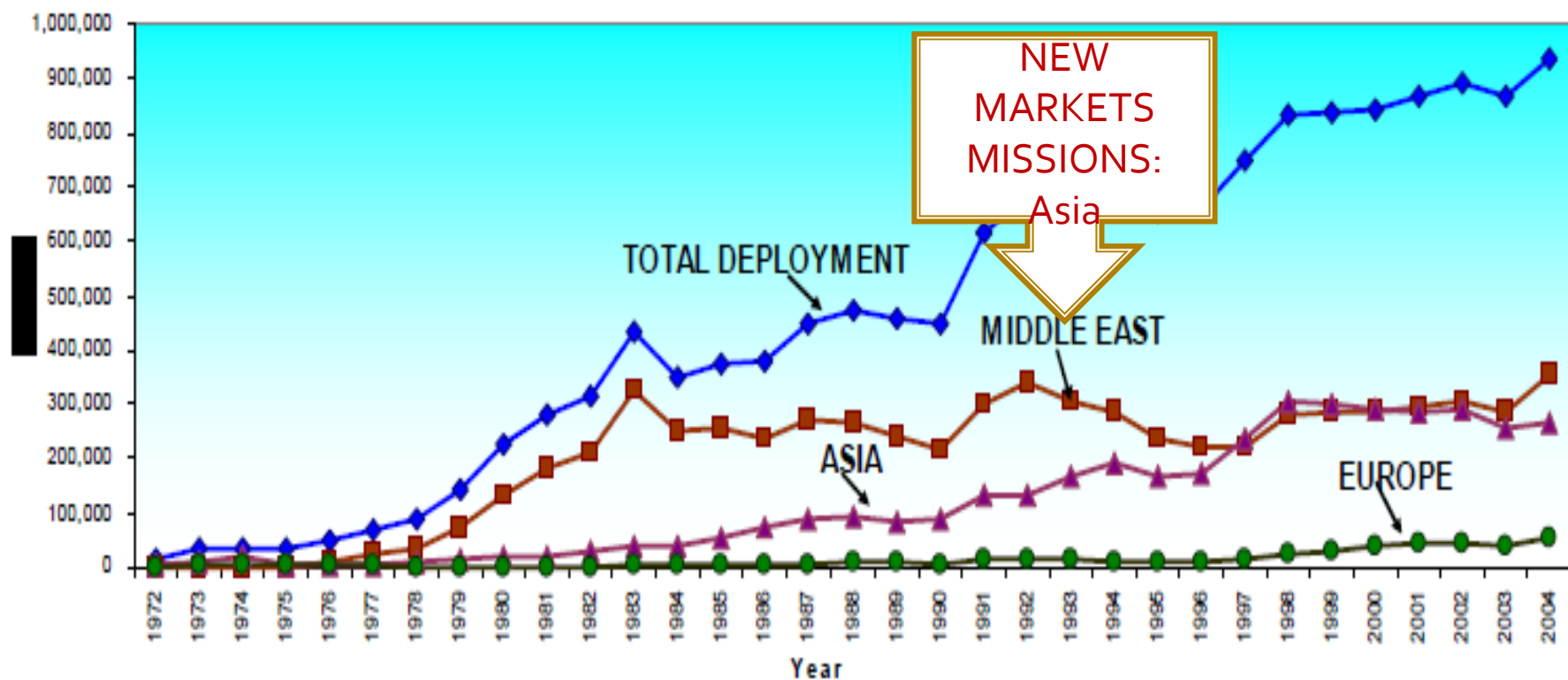


Figure OVERSEAS EMPLOYMENT BY MAJOR REGION OF DESTINATION: 1972-2004

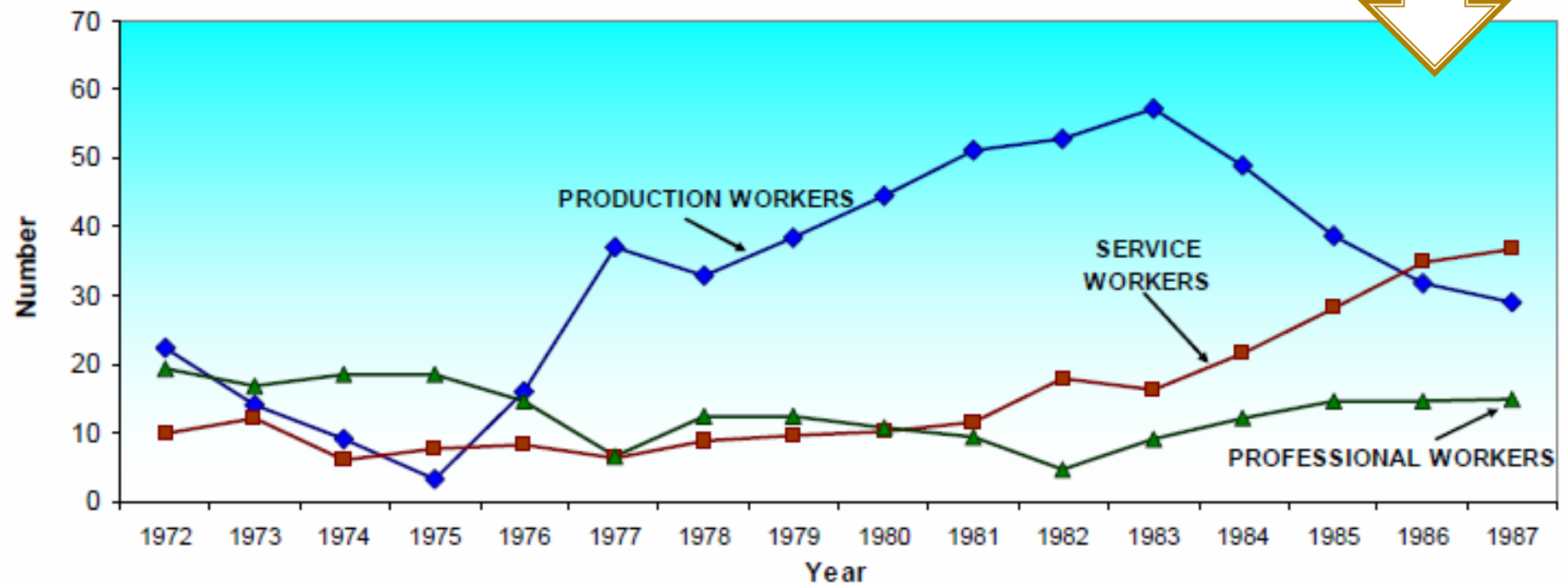


Increasing deployment =  
Increasing welfare concerns:

- Establishment of Overseas Workers Welfare Administration and Philippine Overseas Labor Offices

Figure 1 - PERCENT SHARE BY OCCUPATIONAL GROUP  
TO TOTAL DEPLOYMENT: 1972-1987

SHIFT IN  
OCCUPATIONS



Annual Remittances Inflow, Philippines: 1975-2005

(in million US \$)



# Laws that mandates data sharing and annual report of information on movement and conditions of Filipino nationals

- Government-shared Information System
- Semi-Annual Report to Congress



# THE PHILIPPINE MIGRATION PROFILE: AN ONGOING PROCESS

# Actions Taken

- IOM's technical expertise and assistance in drawing up the Philippine Migration Profile
- Government assessment of need for Migration Profile, identification of gaps and issues on implementation

- **Government** building up on its 50-year gain on data collection, integration, analysis and utilization for planning and policy making
- **Government** preparing to examine the broader context and impact of migration on development

- **International Organizations** providing technical cooperation and support
- **Government** doing consultative meetings to develop and plan the implementation of Migration Profile, based on social dialogue with its tripartite partners, stakeholders and partners